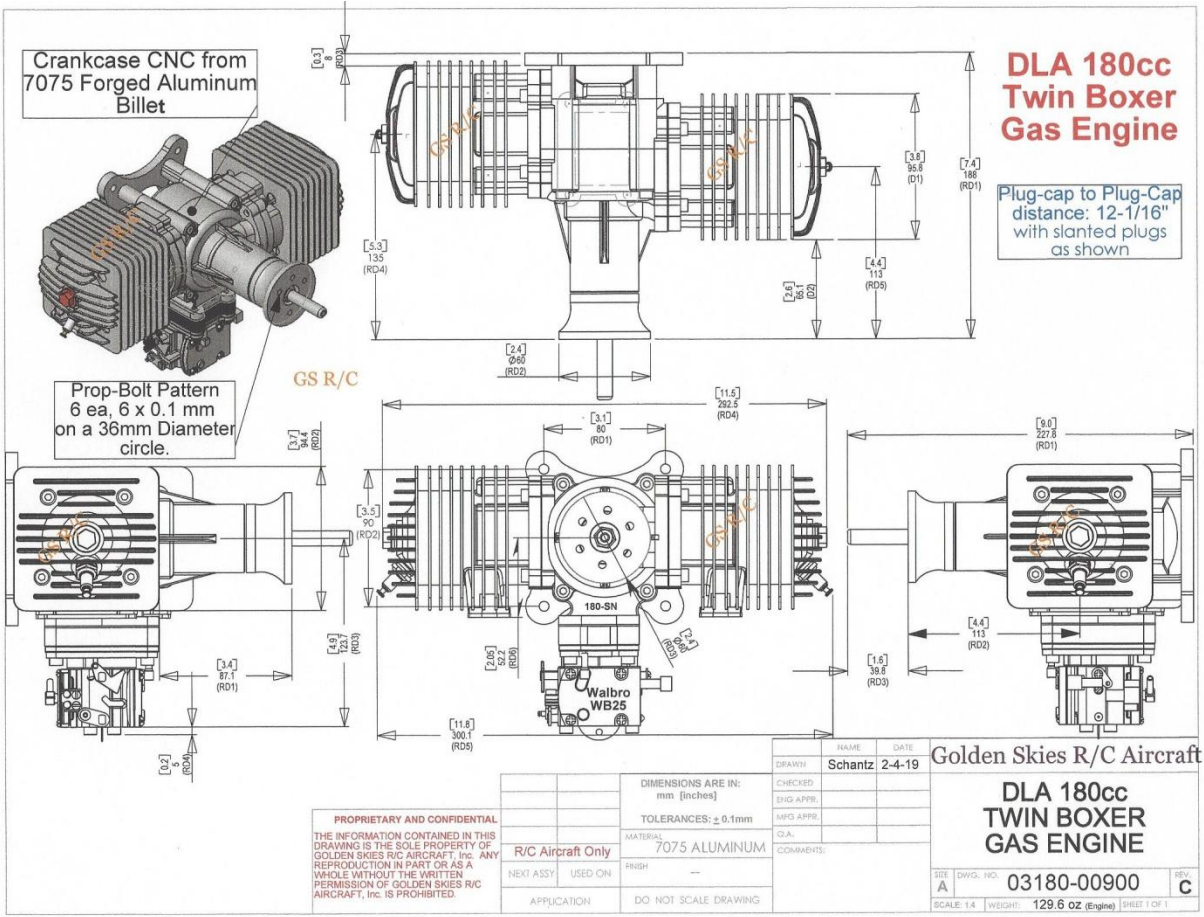


# GOLDEN SKIES R/C AIRCRAFT, Inc.

## Technical Notes:

# DLA 180cc Twin Boxer Gas Engine

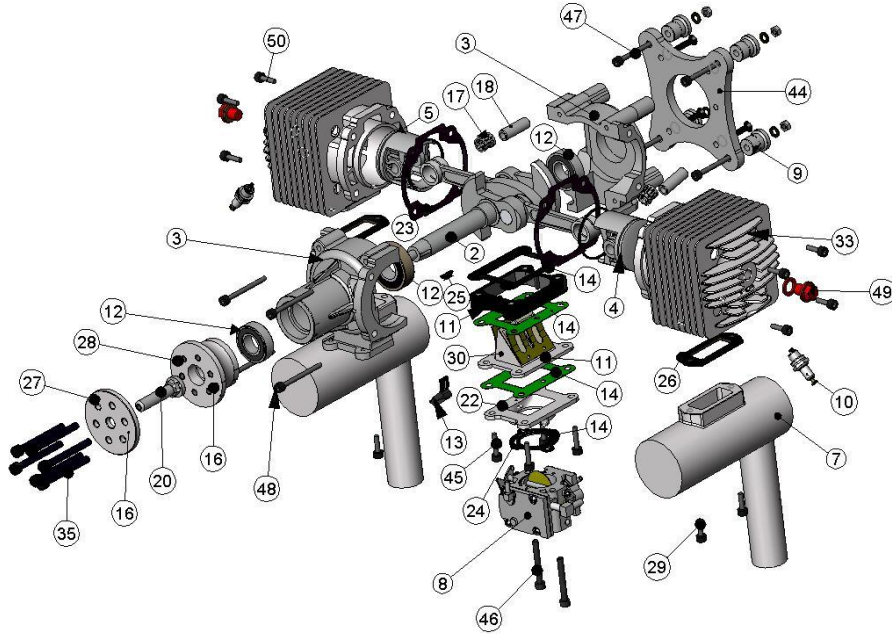
## Slanted Spark-plug Configuration



Straight Spark-plug Configuration: Plug-Cap to Plug-Cap = 13-1/4" (~337 mm)

Slanted Spark-plug Configuration: Plug-Cap to Plug-Cap = 12-1/16" (~306 mm)

**GOLDEN SKIES R/C PROPRIETY INFORMATION  
NOT TO BE COPIED OR DISTRIBUTED WITHOUT  
GOLDEN SKIES'S WRITTEN PERMISSION.**



See “Parts (Repair)” navigation bar on engine page for parts pricing and availability.

**GOLDEN SKIES R/C PROPRIETY INFORMATION  
NOT TO BE COPIED OR DISTRIBUTED WITHOUT  
GOLDEN SKIES’S WRITTEN PERMISSION.**

# GOLDEN SKIES R/C AIRCRAFT, Inc.

## Specifications:

### **DLA 180 cc** (10.98 in<sup>3</sup>) Gas Engine

Power:	18.0 HP @ 6,200 rpm
Displacement:	180 cc (10.98 in <sup>3</sup> )
Idle Speed:	~ 1,300 rpm
Static Thrust:	~90 pounds @ 100 m (~ 328 ft Altitude) (Pulling Force) ~88 pounds @ 1800 m (~5,900 ft Altitude)
Propellers (Recommended):	32 x 8 / 10 / 12 , 33 x 10
RPM Range:	~1,100 to ~6,200 rpm
Carburetor:	Walbro™, (Typ: WB-47-xxx), Diaphragm Pump
Spark Plug:	CM-6 Special, Iridium, 2 ea
Muffler Volume:	255 cc / ea (15.6 in <sup>3</sup> )
Cylinder Diameter (Bore) Stroke:	53.0 mm / 41.0 mm (2.09 in / 1.61 in)
Compression Ratio:	7.8 : 1
Gas	87 – 89 (“Regular”), - 92 Octane, unleaded
Gas : Oil Ratios:	30 – 35:1 Break-in Trial Run; 40-45 : 1 Normal Flying
Weights:	Engine: 129.6 oz, Muffler (2): 10.6 oz, Ignition: 7.3 oz (Total: 160.1 oz = 10.0 lbs)
Ignition:	Fully Advancing, Auto, <b>C</b> apacitive <b>D</b> ischarge <b>I</b> gnition
Ignition Power:	6.6 to 8.4 VDC, 2S – LiPO Unregulated

### Support Information:

Ignition Battery:	2-S, LiPo, (2,100 - 2,700 mAh Typical), un-regulated. 6-S, NiMH, (2,100 mAh Typical), un-regulated
Break-in Propeller (Suggested)	32 x 10
Intake Manifold:	4-Leaf Reed Valve, V-Configuration
Items Included in Retail Pkg:	Engine, Muffler (2) / Gasket & Bolts, CD Ignition, Sparkplug (2), Stand-off Mounts (Machined), Operations Manual (on Website), Bolts–Mounting, Spiral-Nylon Wire Sleeve

	Mount Dimensions		Mounting Bolts	Stand-Offs	Prop Bolts	Muffler Bolts
	X (mm)	Y (mm)				
DLA 180	80	90	6.0 x 1.0- 25 mm	18.0 OD x 90 L mm	6.0 x 1.0 – 50/60 mm	5.8 x 0.8 - 16 mm

### Suggested Items:

<a href="#">Gas Tank</a>	Pilot’s Choice
<a href="#">Fuel Point™</a>	(From Golden Skies R/C)
<a href="#">Gas Line</a>	(From Golden Skies R/C)
<a href="#">Ignition Kill Switch</a>	(From Golden Skies R/C)
<a href="#">Propeller</a>	SAIL Prop. From GS R/C
2-Cycle Oil	Pilot’s Choice
Gas Line Filter	(From Golden Skies R/C)
Mounting Template	(From Golden Skies R/C)
Propeller Drill-bit Guide	(From Golden Skies R/C)
Torque Wrench	Any, in appropriate torque range
<a href="#">Spinner</a>	(From Golden Skies R/C)
Battery, Ignition	(From Golden Skies R/C)
Tachometer	(From Golden Skies R/C)